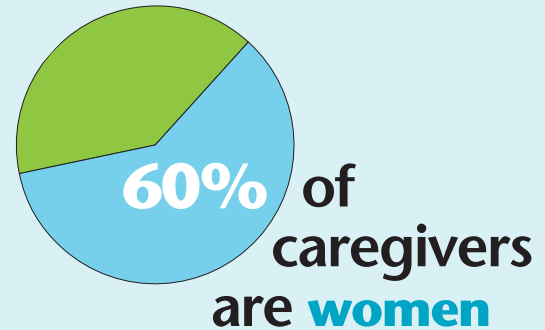
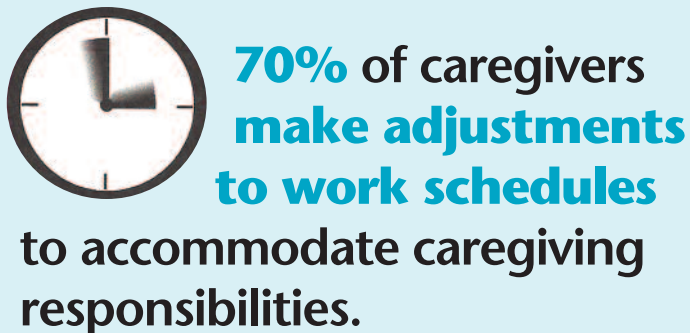


Family Caregivers



The typical caregiver is 49, female, taking care of her widowed mother, and juggling her career and family.



On average, women caregivers lose **\$324,044** in lost wages, social security benefits, and retirement plans over a lifetime.



Caregivers' estimated out-of-pocket costs: **\$5,531** annually

Women caregivers are **2x** more likely than non-caregivers to end up in poverty

Each year caregivers provide **\$470 billion** worth of **unpaid care**.

Learn more at:

Women's Institute for a Secure Retirement
wiserwomen.org